

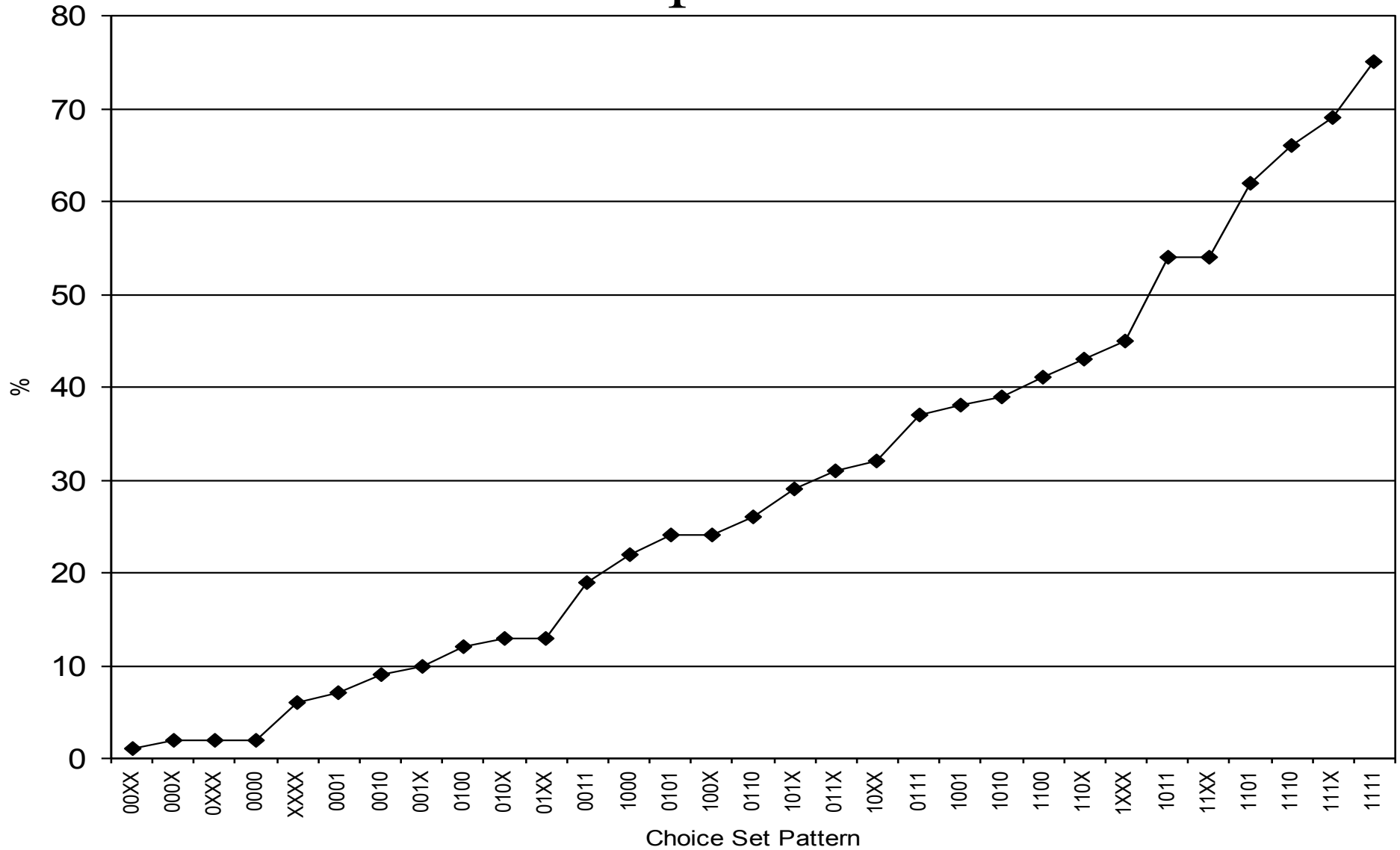
The **ACT**<sup>®</sup>



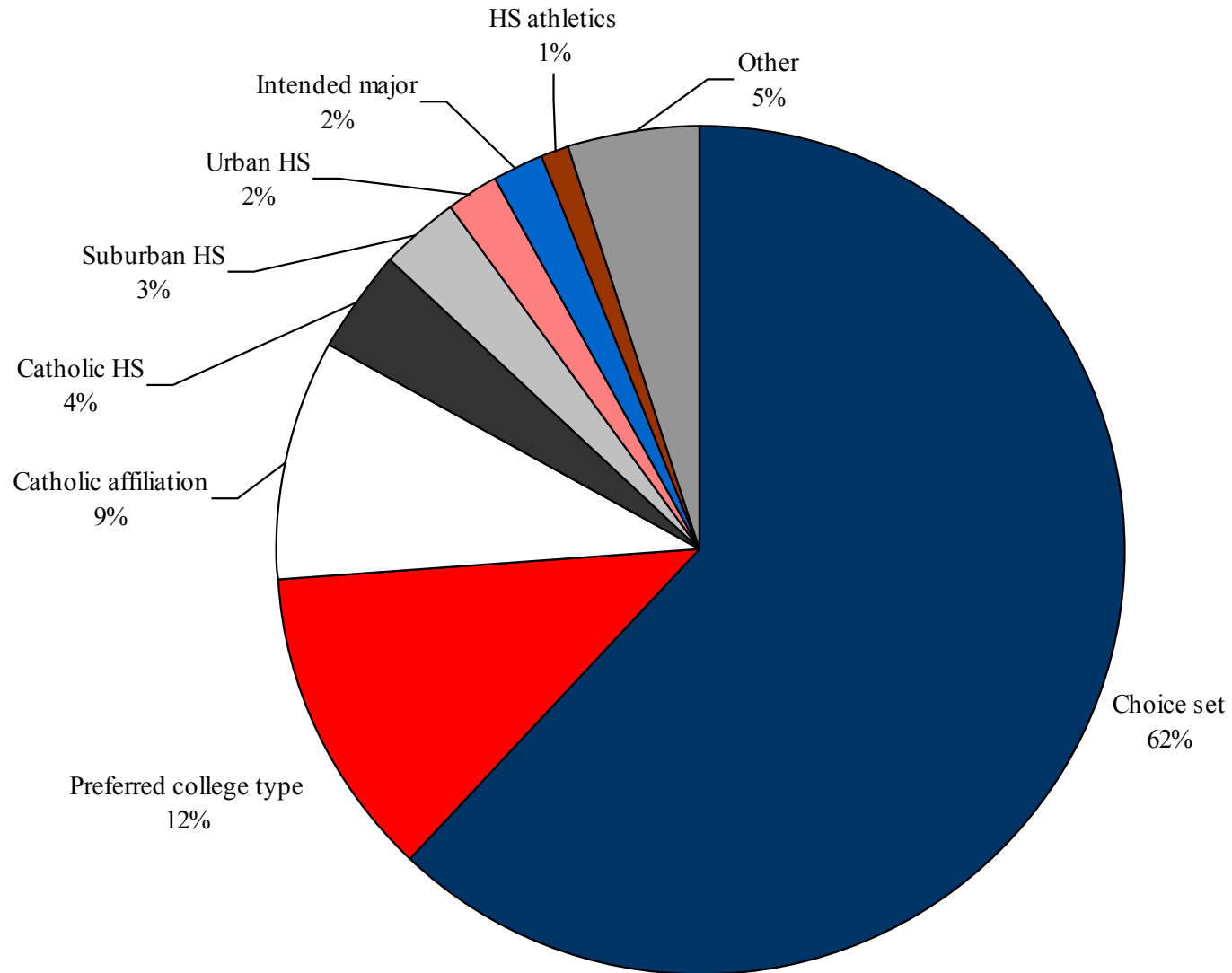
---

**ACT**<sup>®</sup>

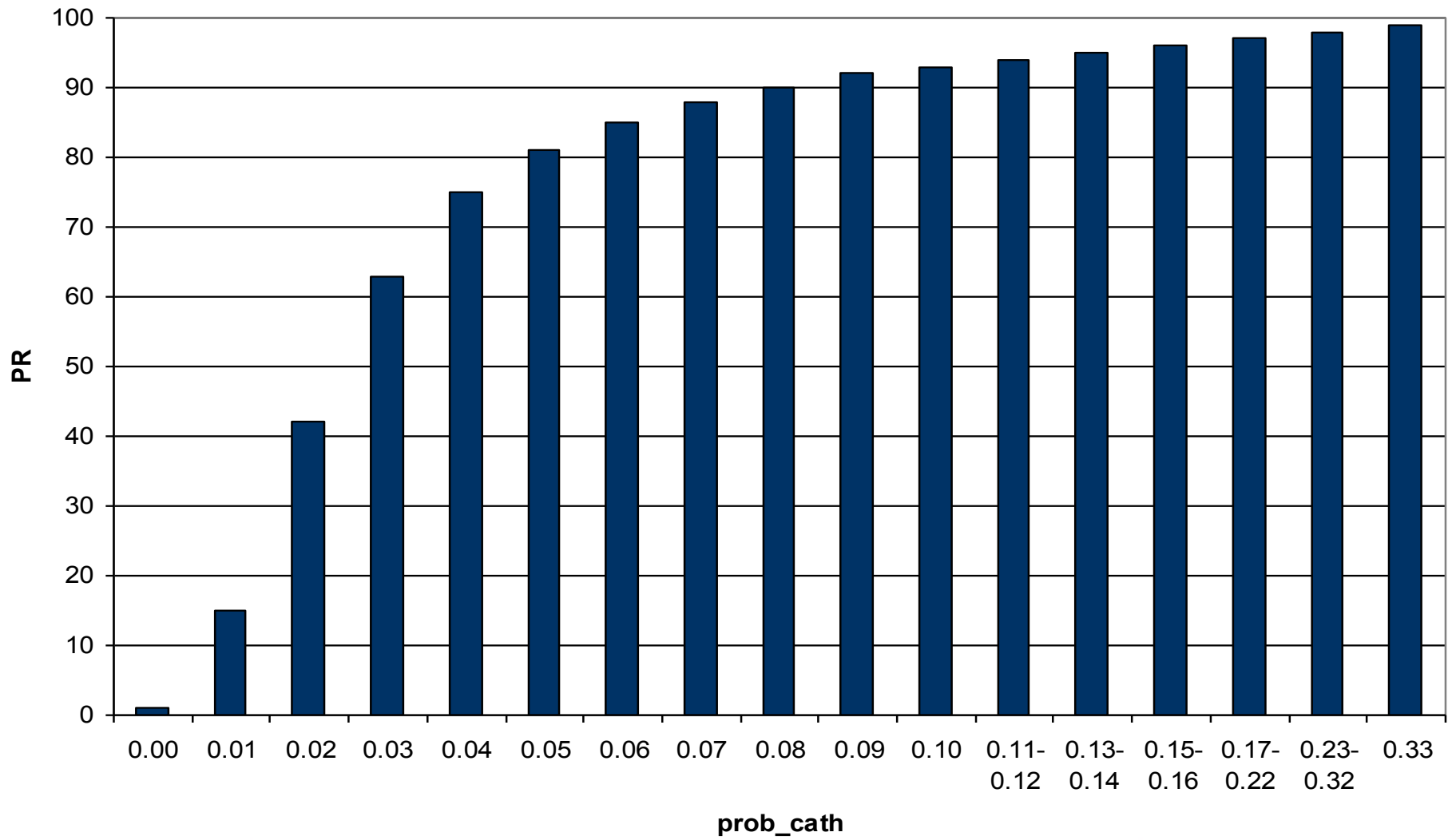
# Choice set pattern scores



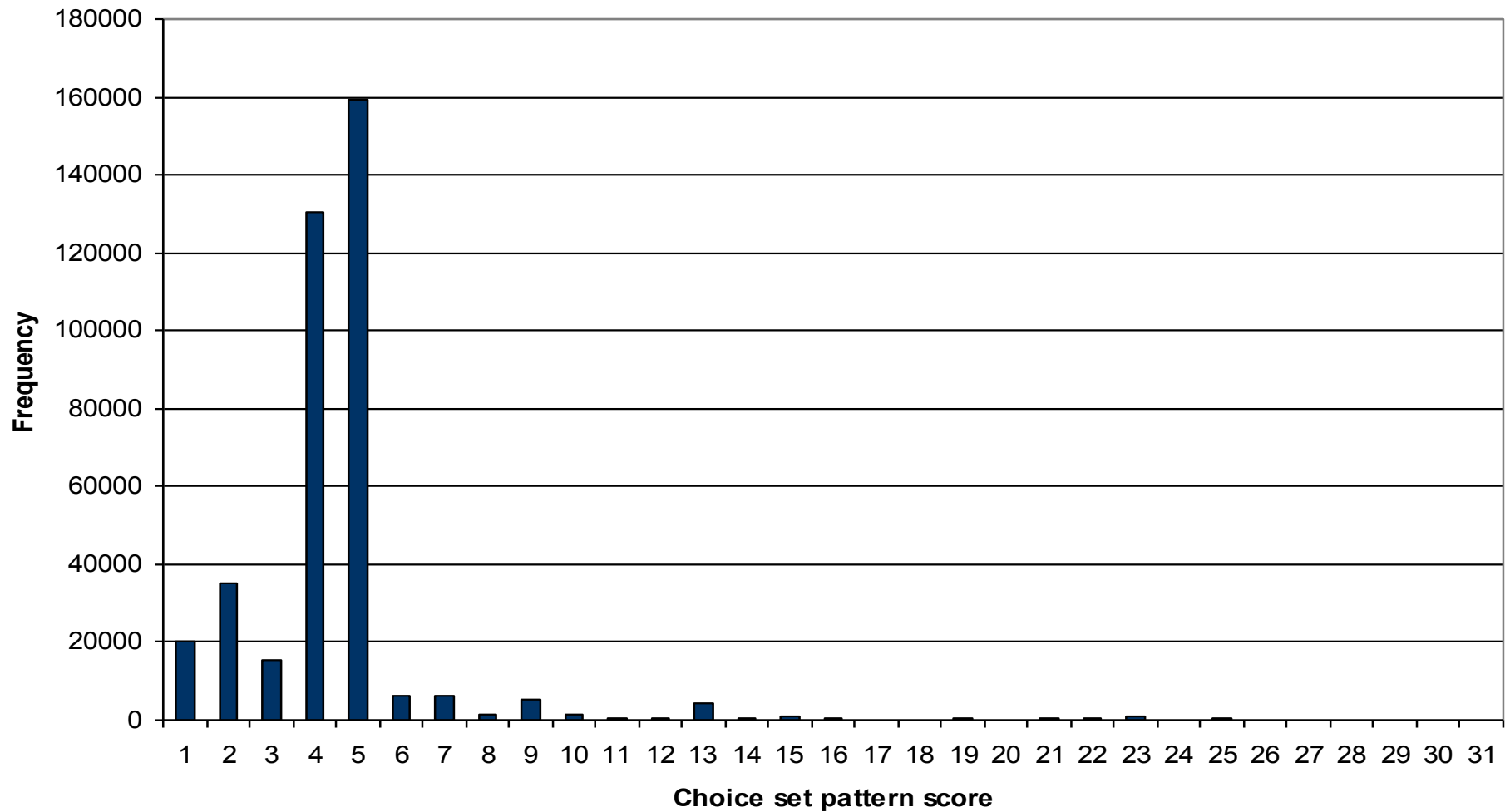
## Relative Importance of each variable in predicting enrollment in a Catholic College



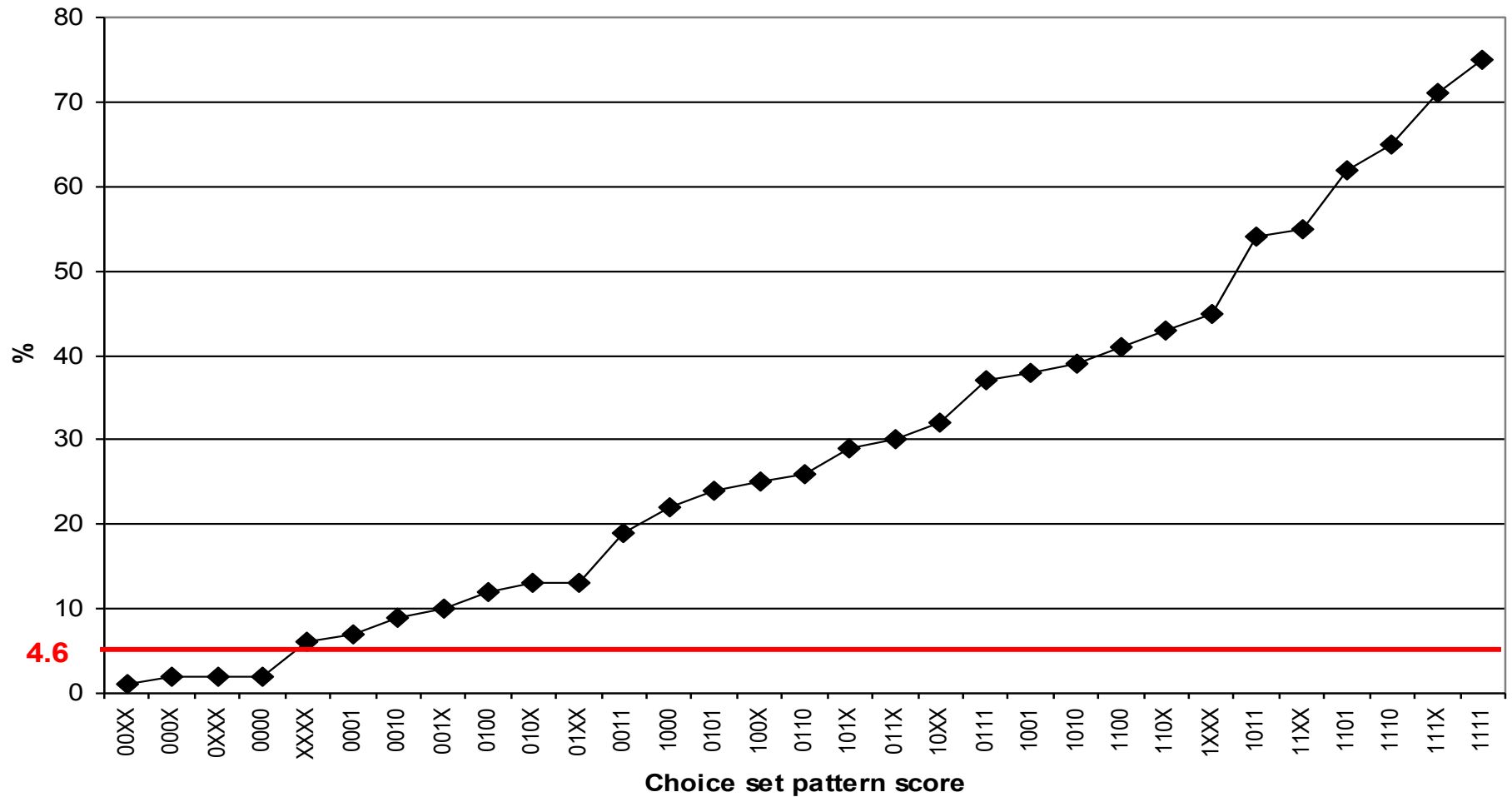
## Percentile ranks associated with probabilities



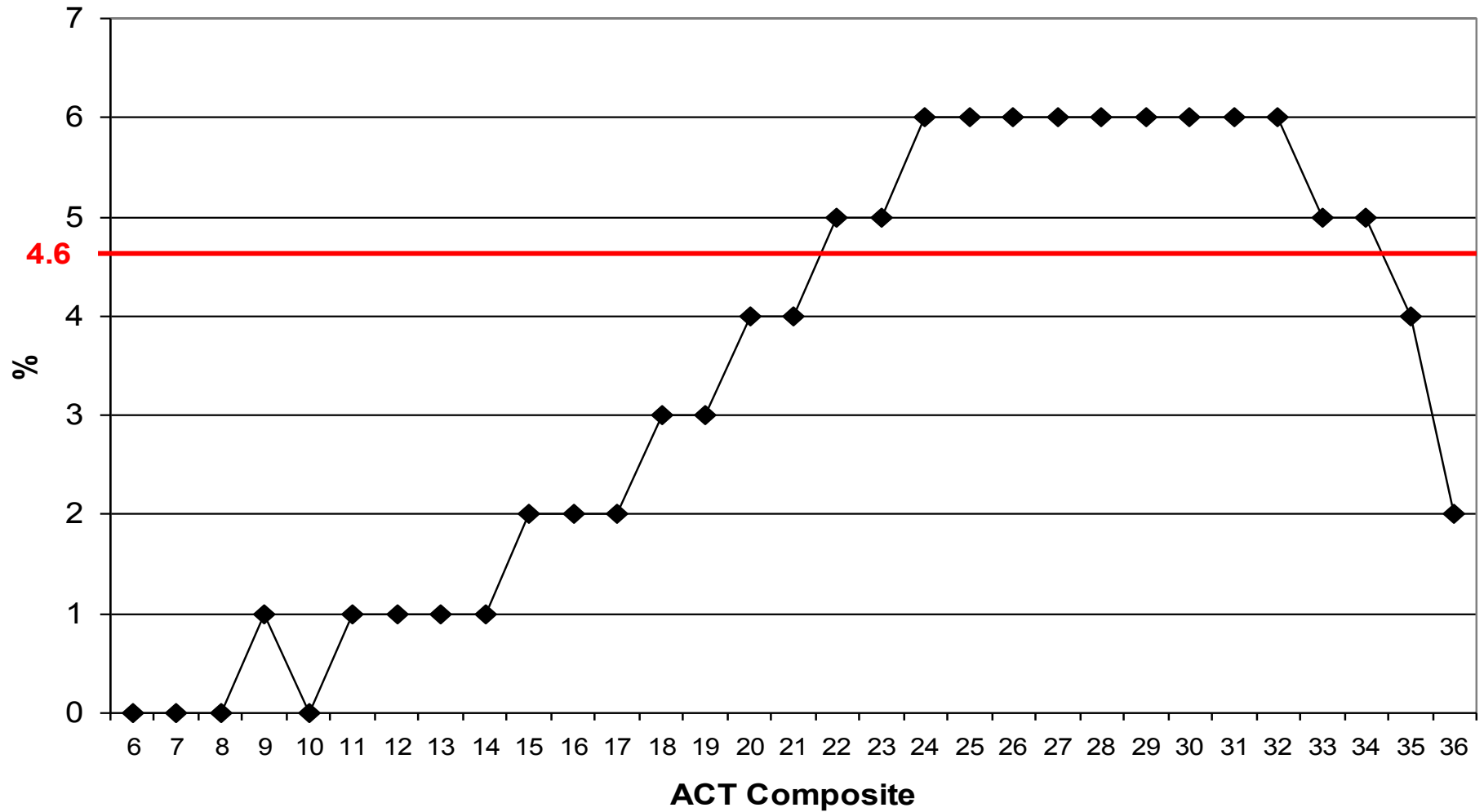
# Choice set pattern



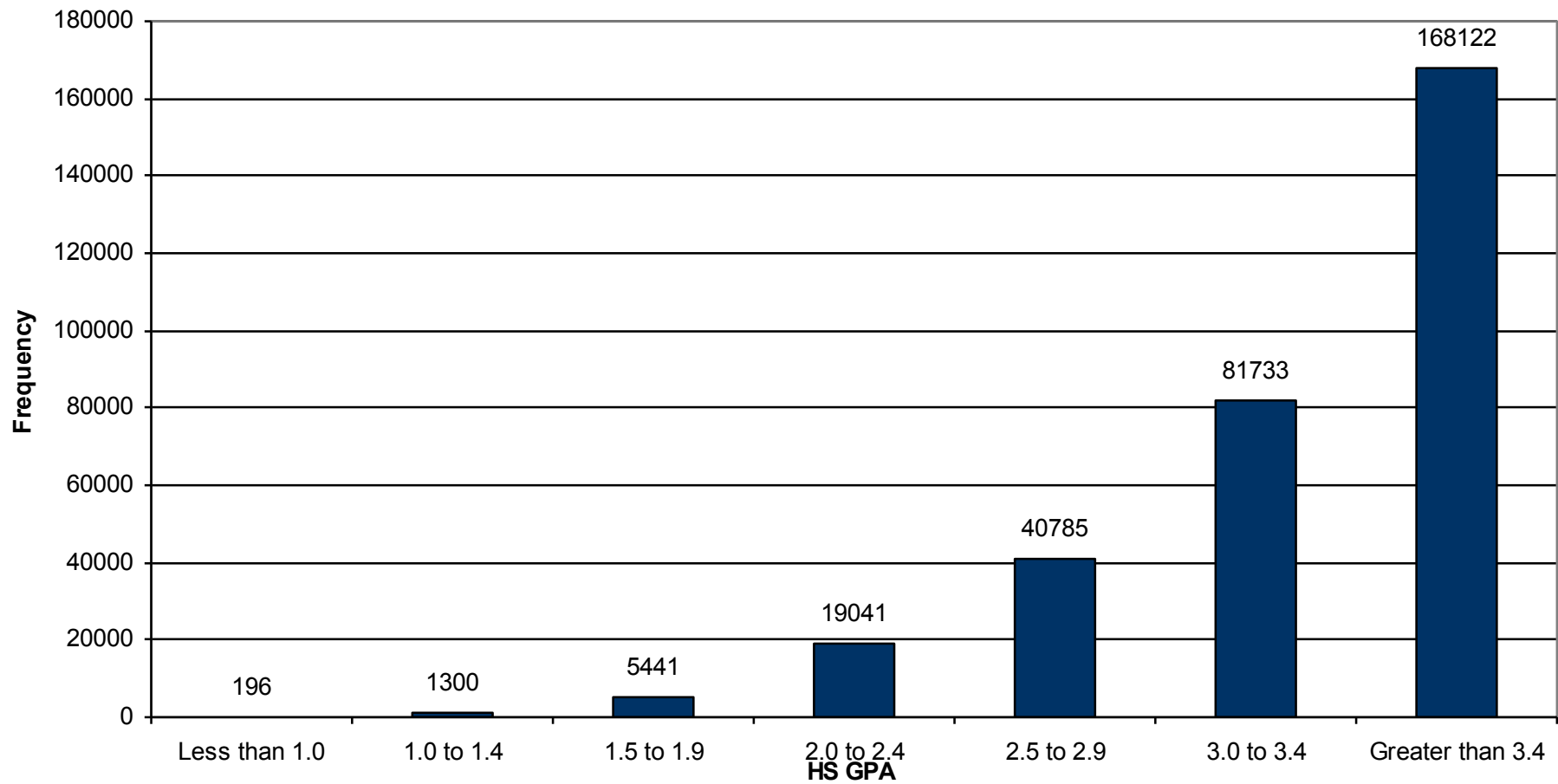
# Choice set pattern



# ACT composite

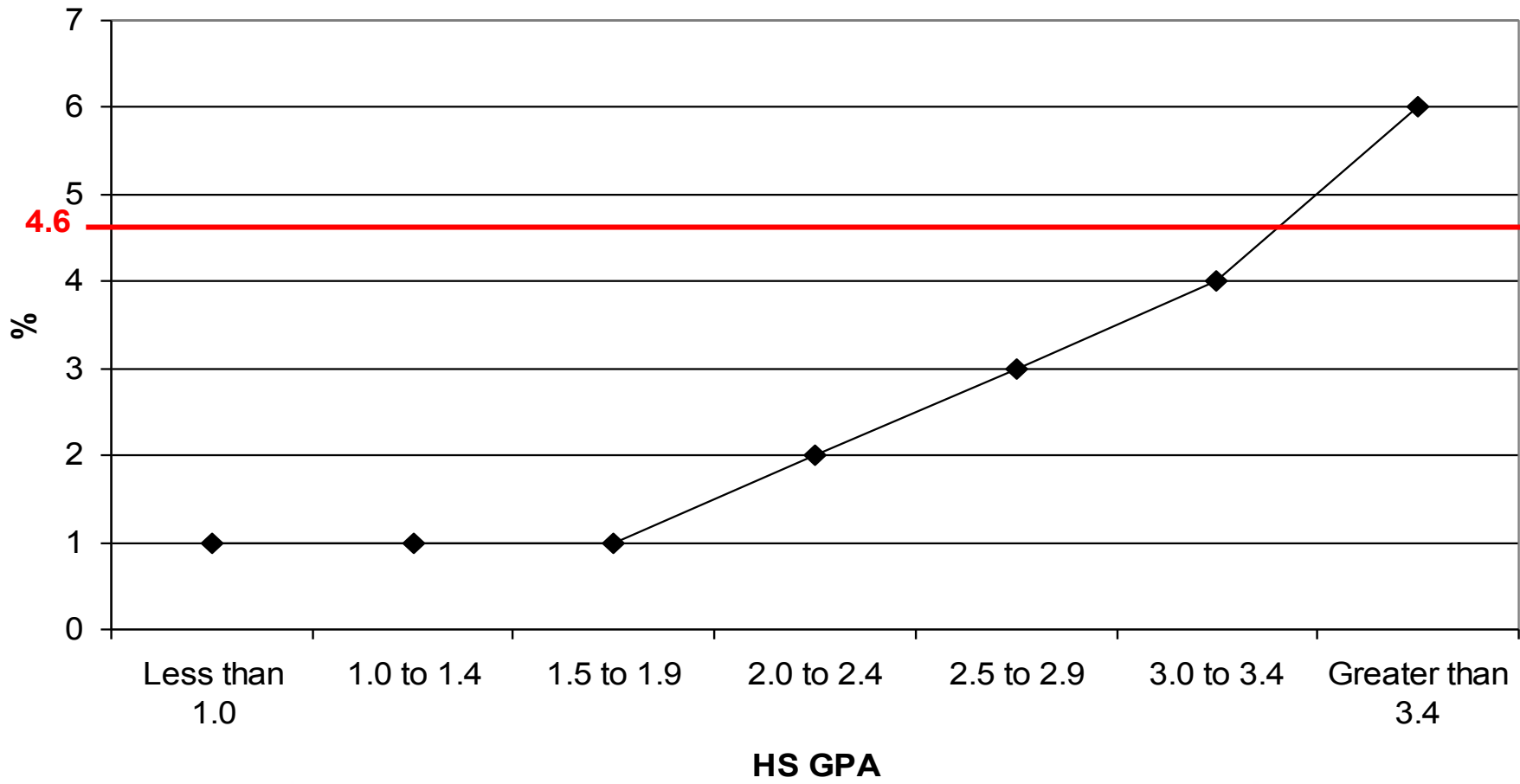


# High School GPA

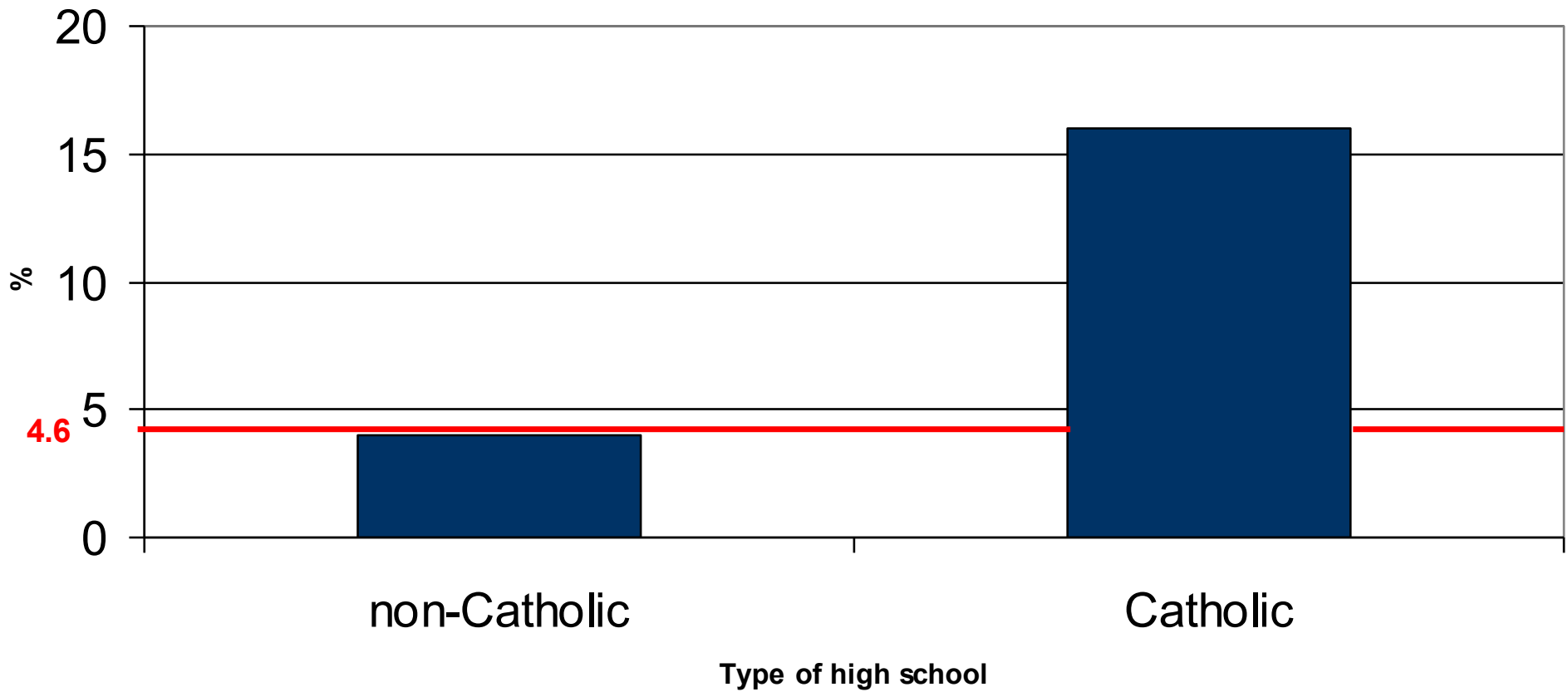




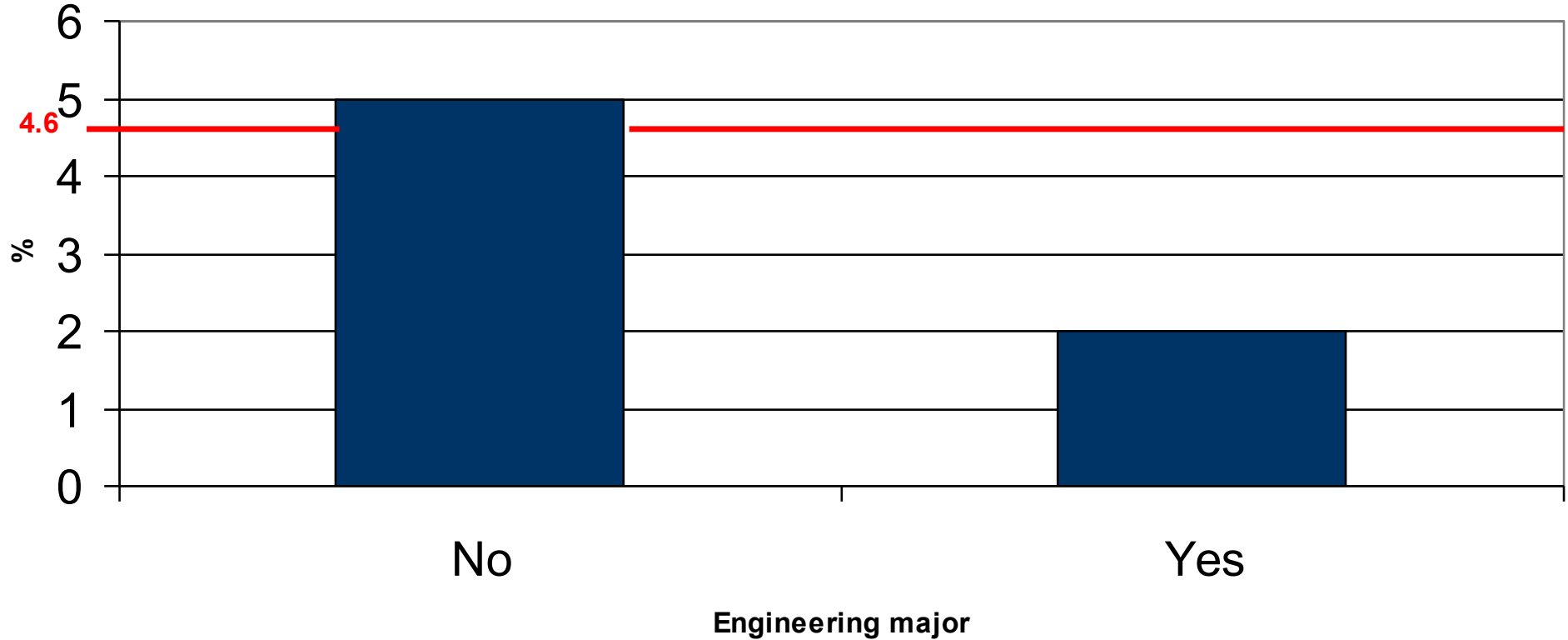
# High school GPA



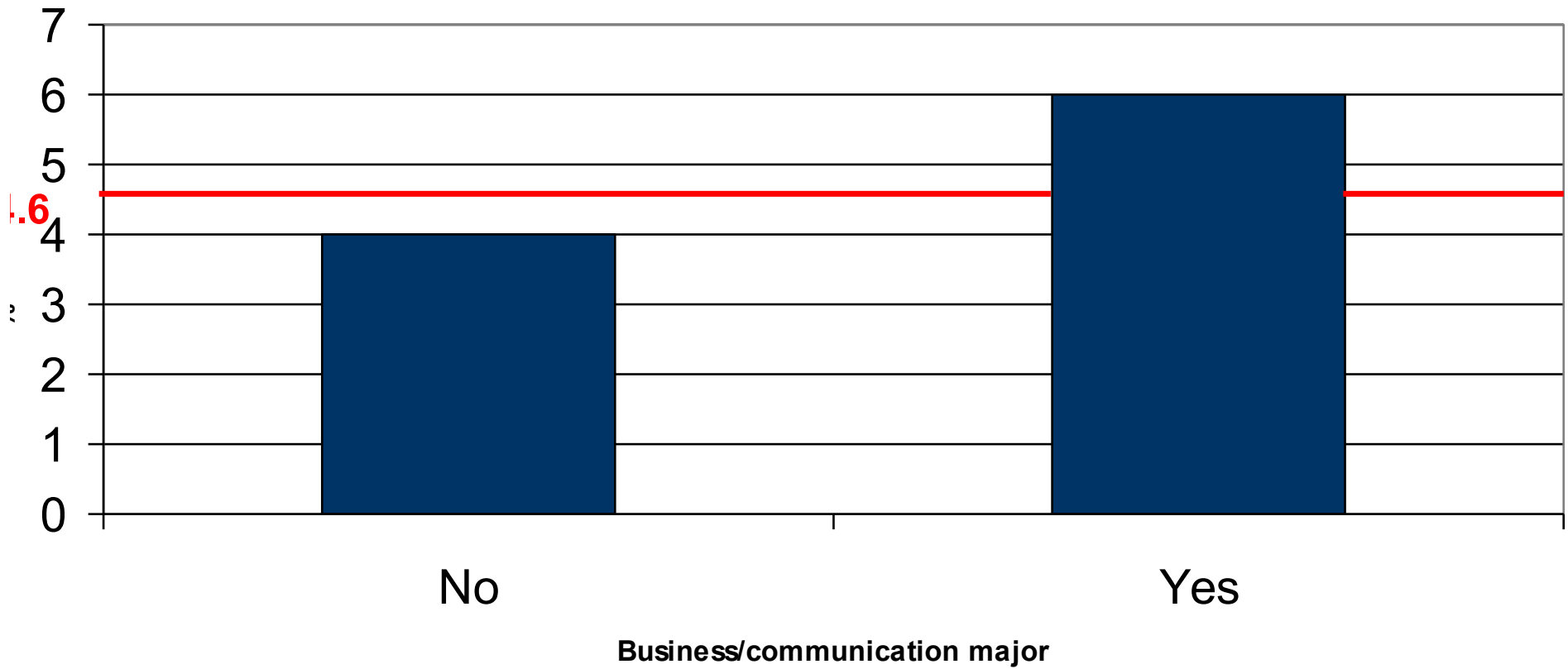
# Type of high school



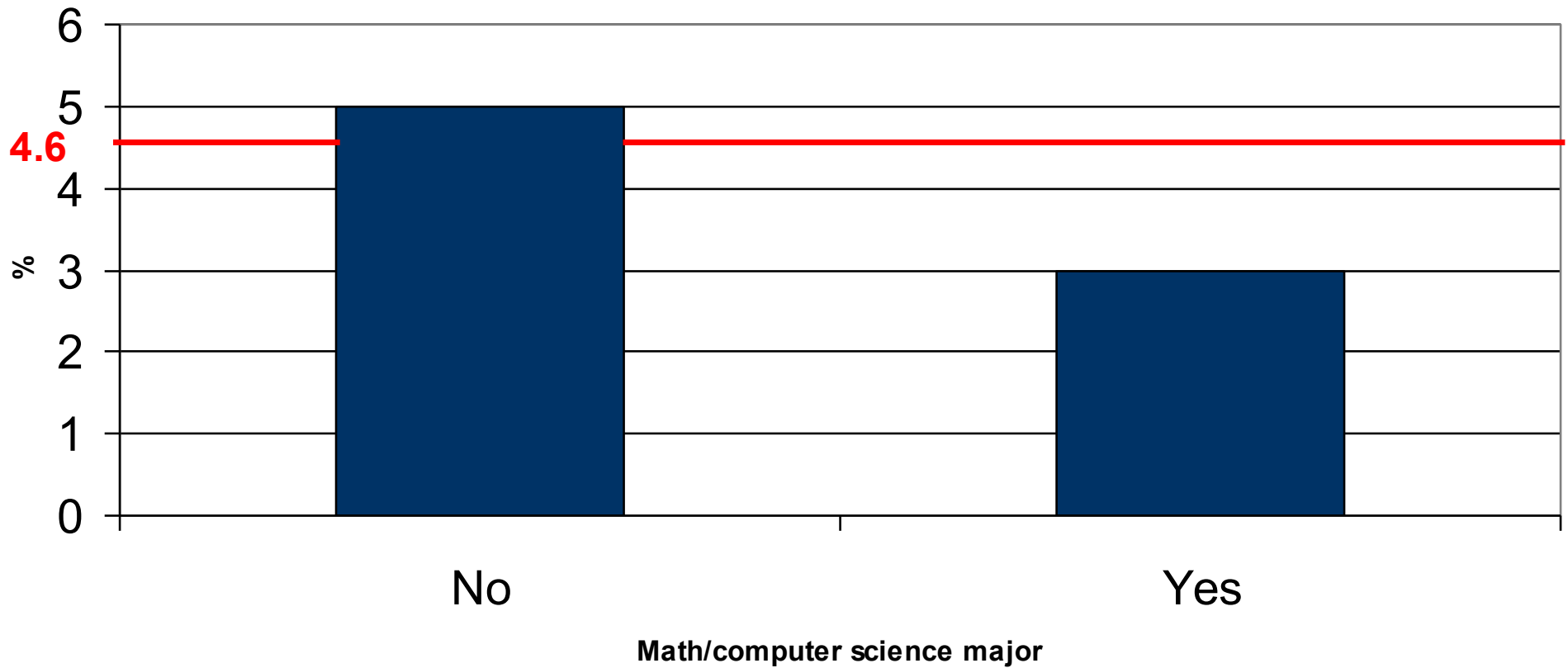
# Engineering major



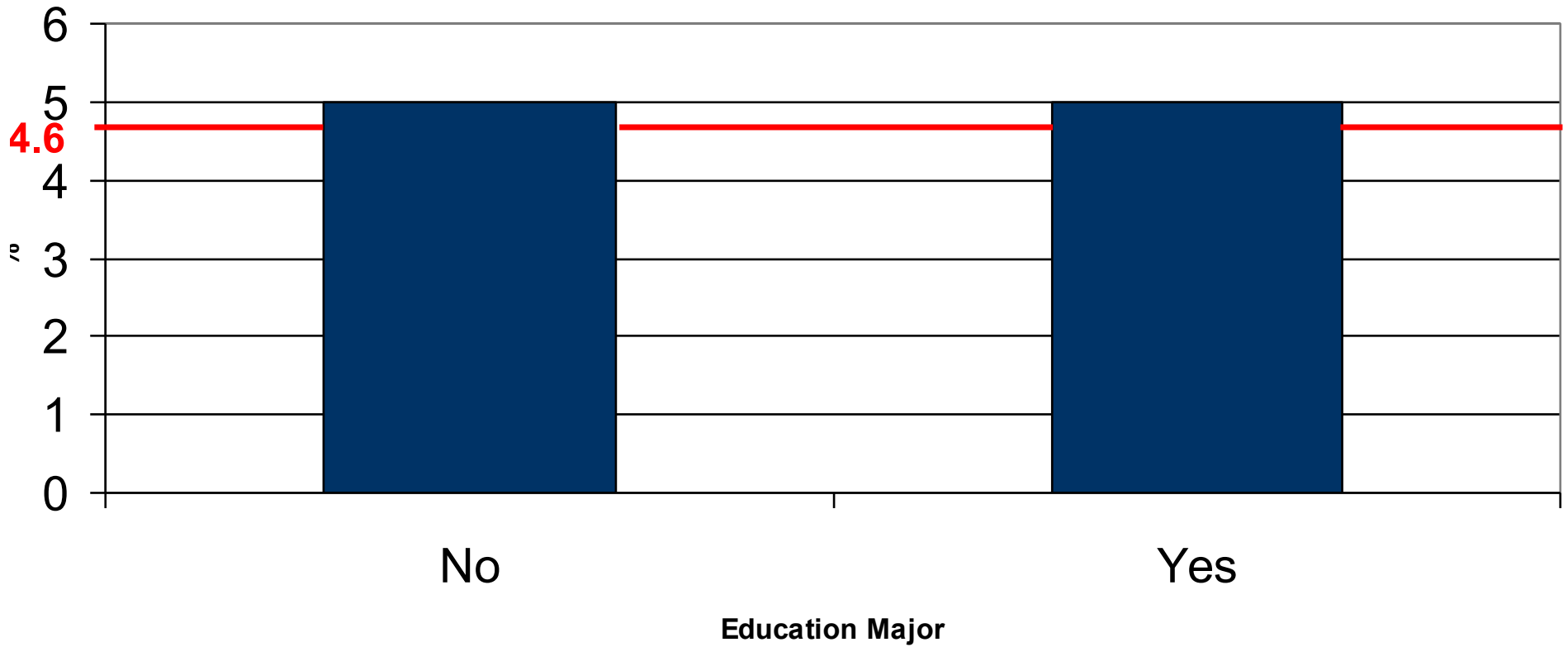
# Business/communication major



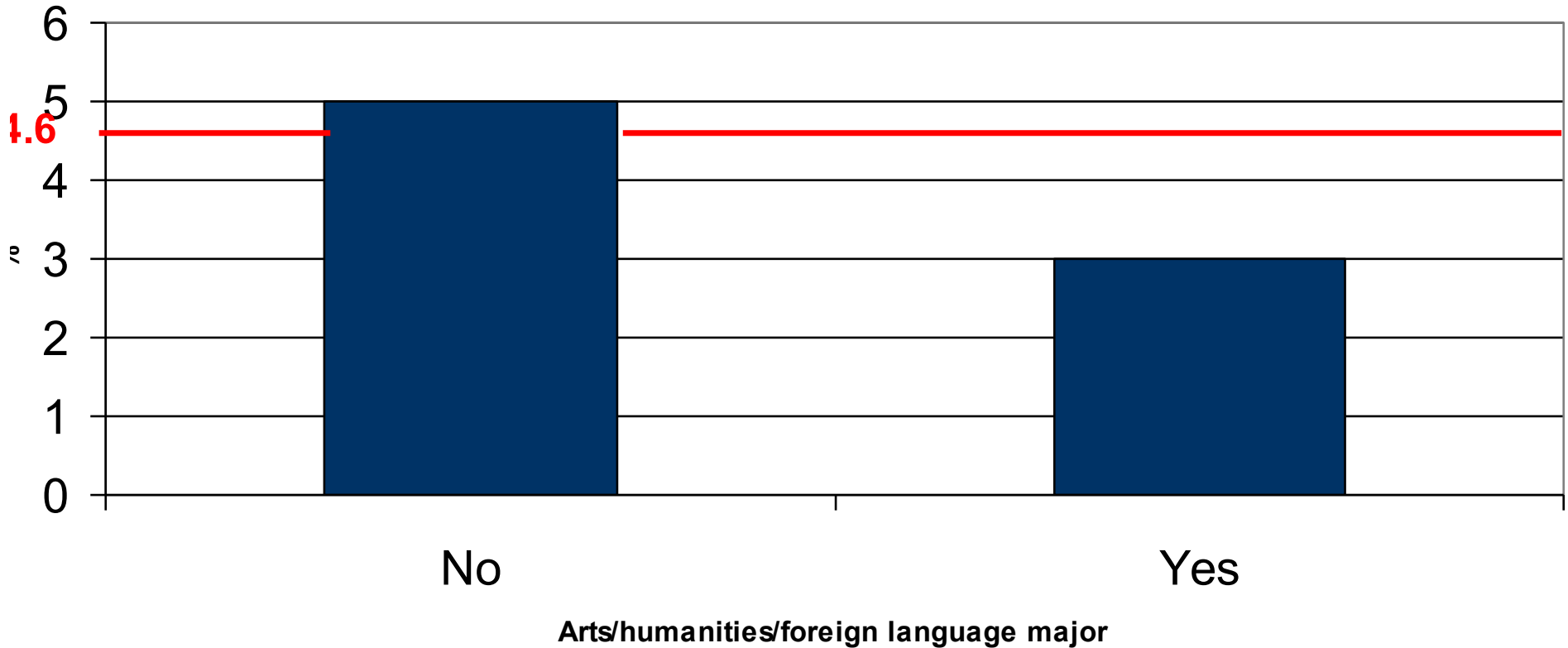
# Math/computer science major



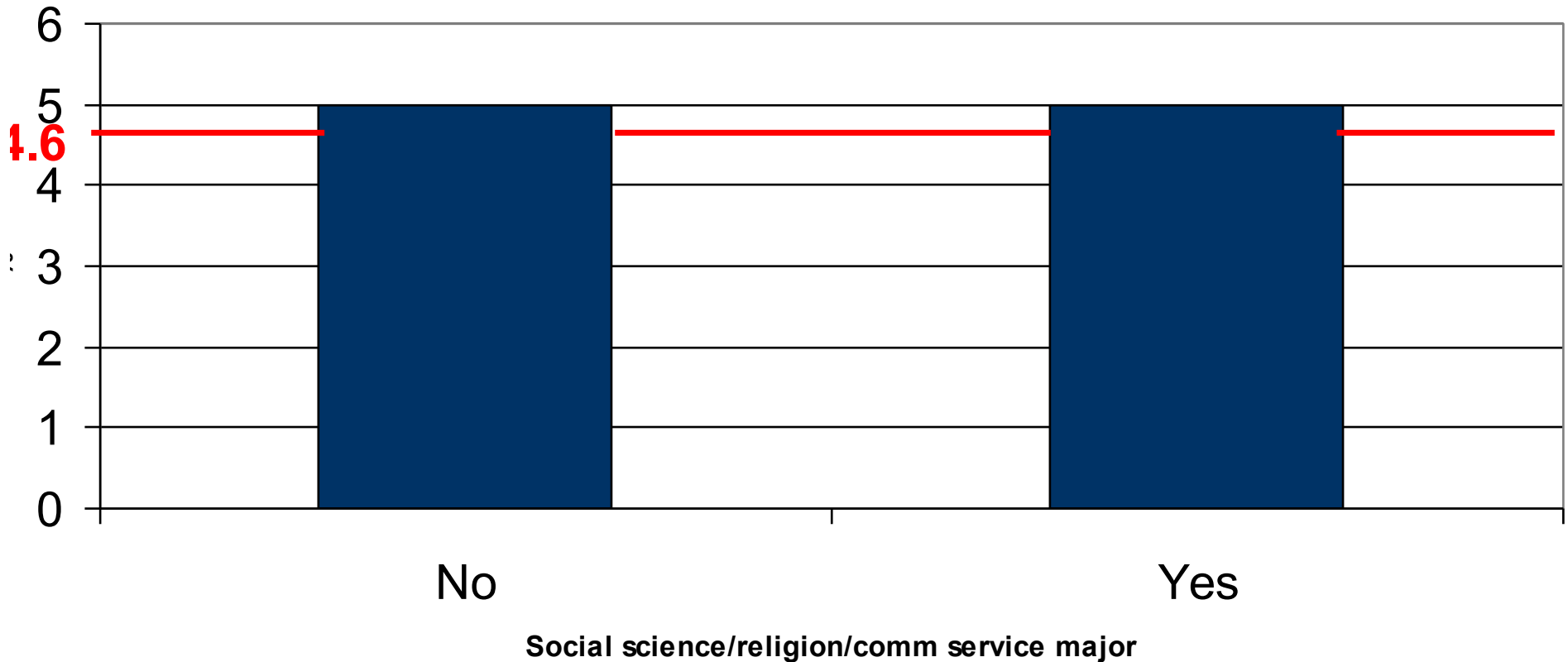
# Education major



# Arts/humanities/foreign language major

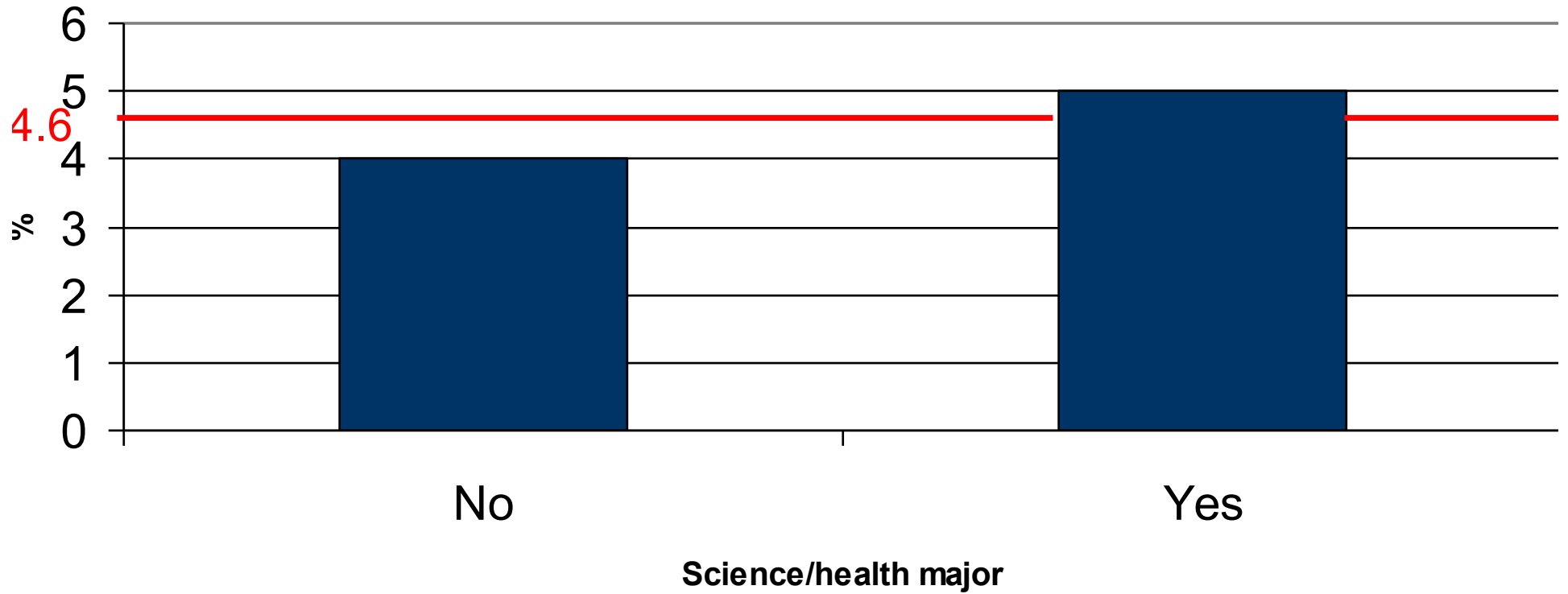


# Social sci/religion/comm service major





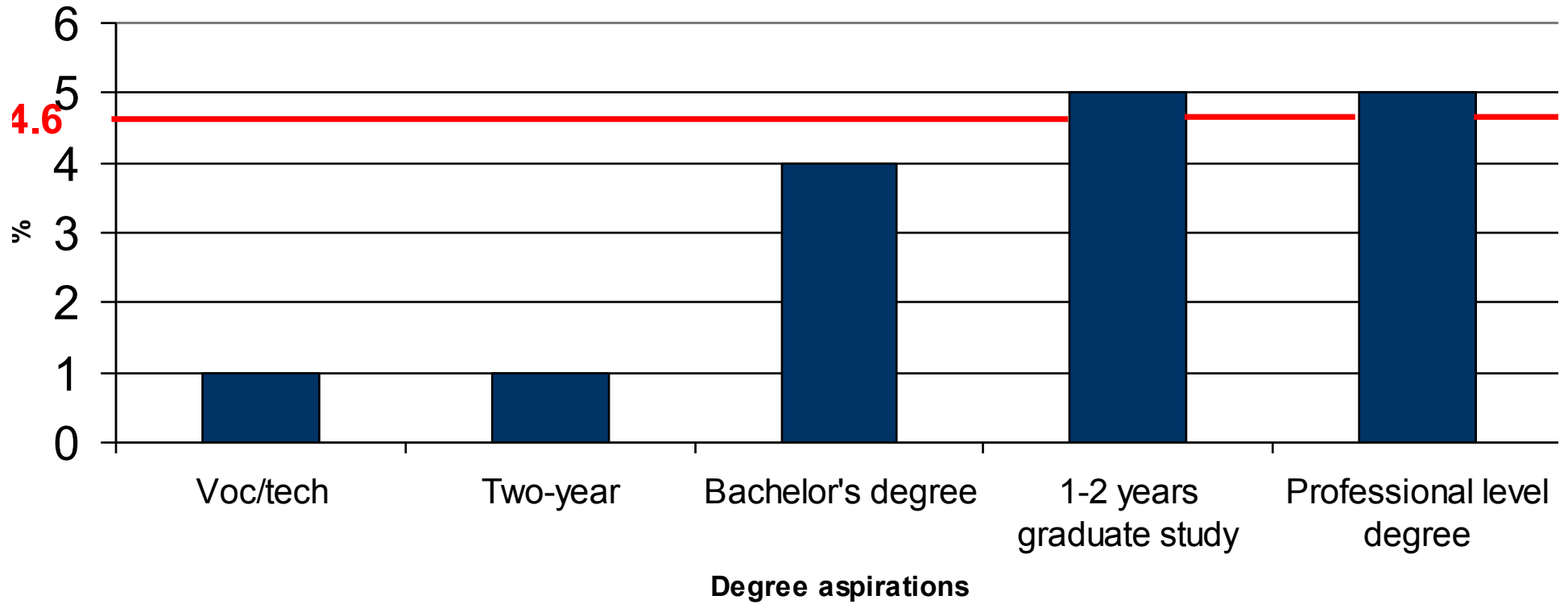
## Science/health major



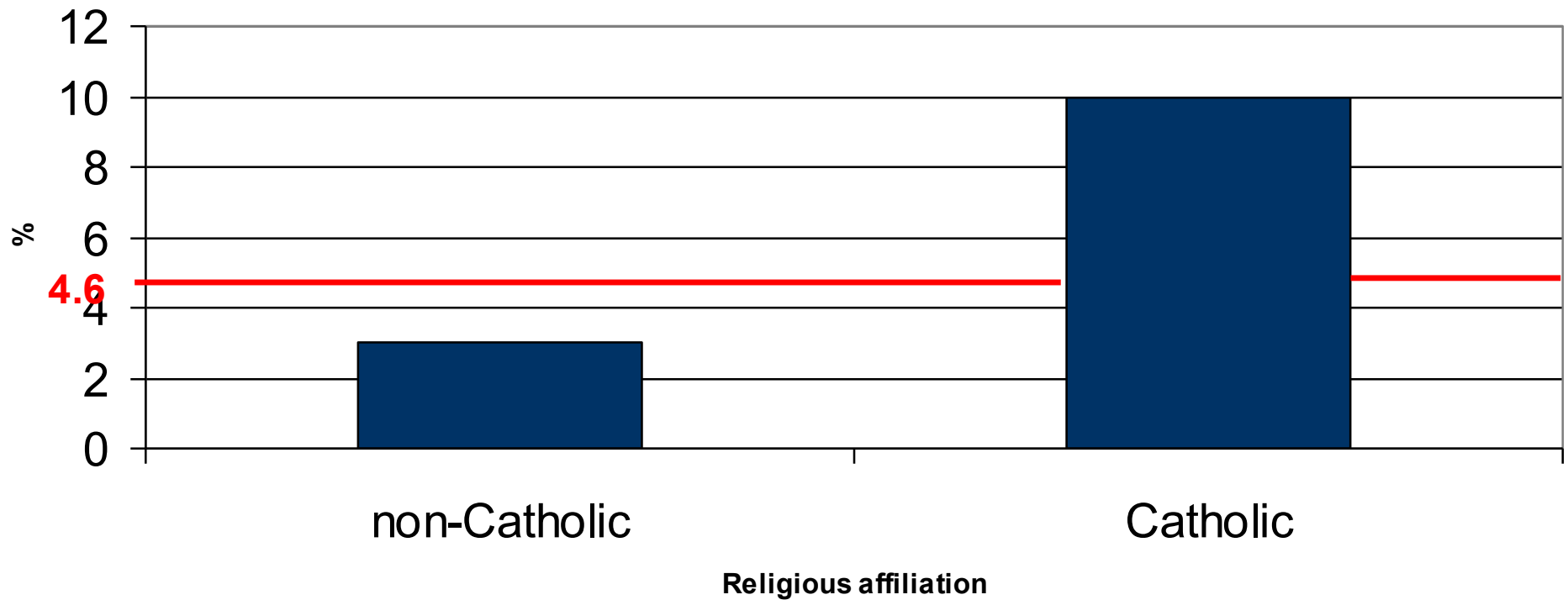
# Intended occupation



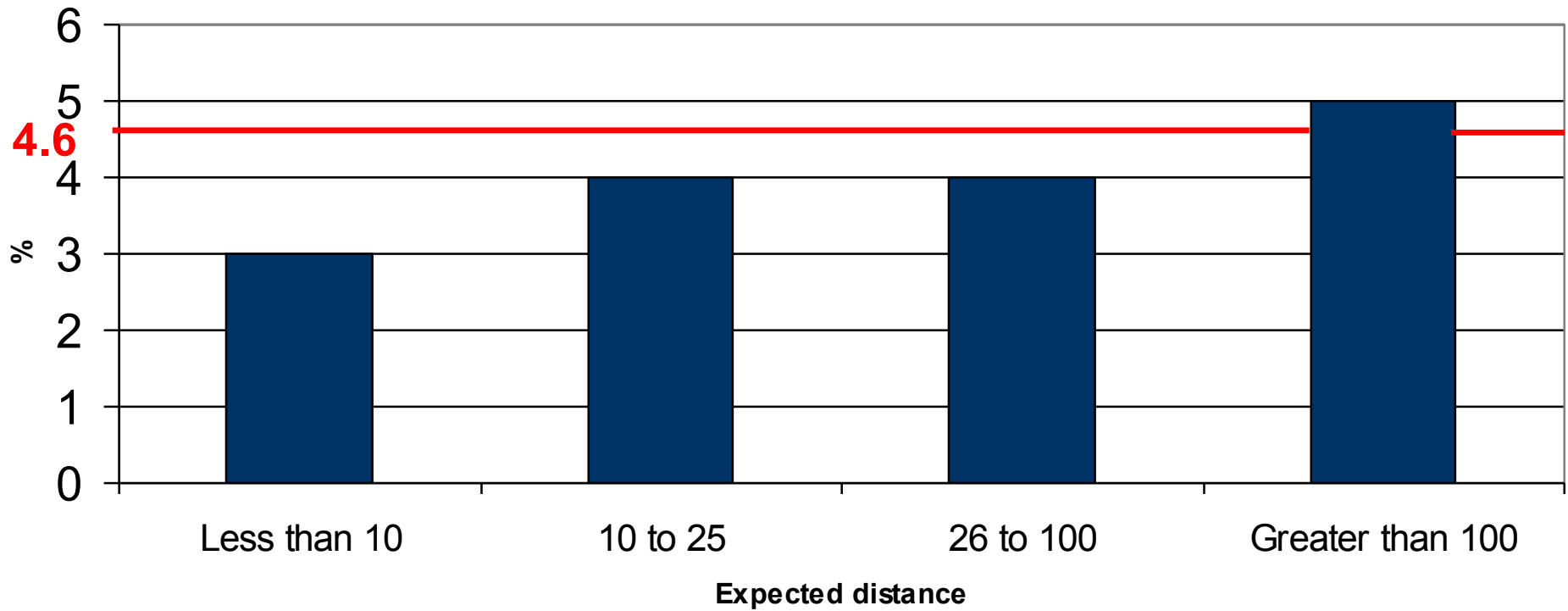
# Degree aspiration



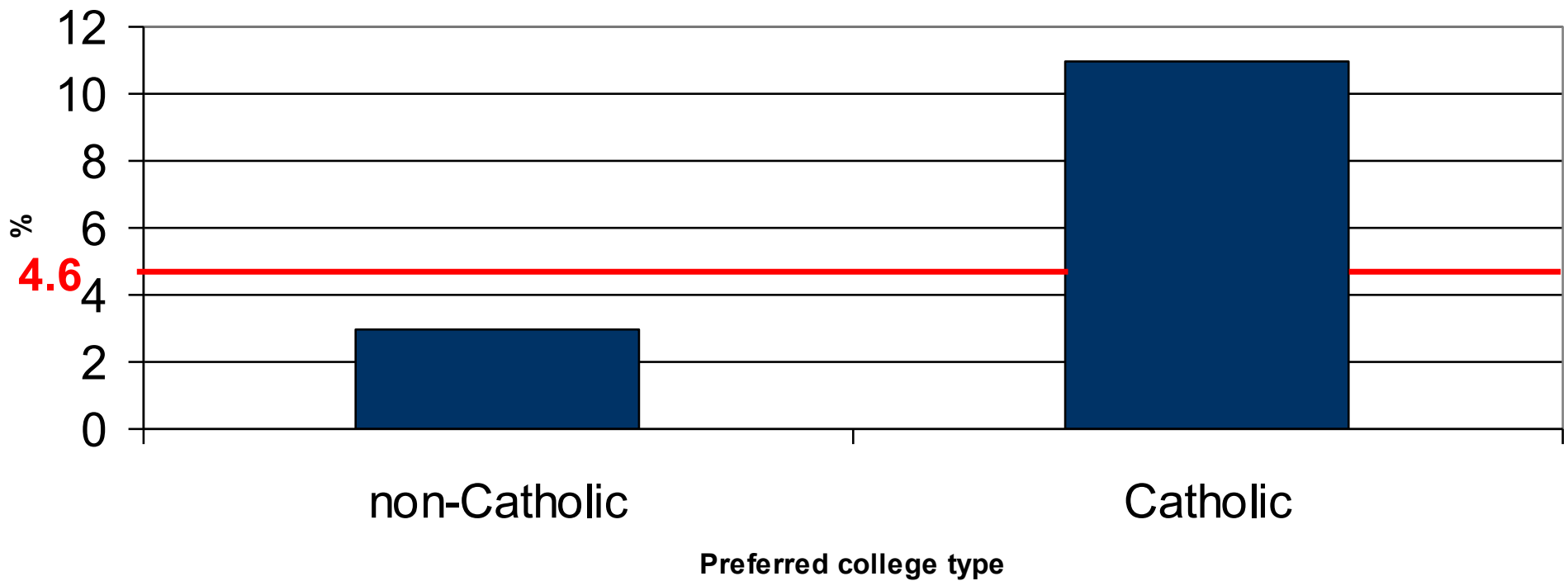
# Religious affiliation



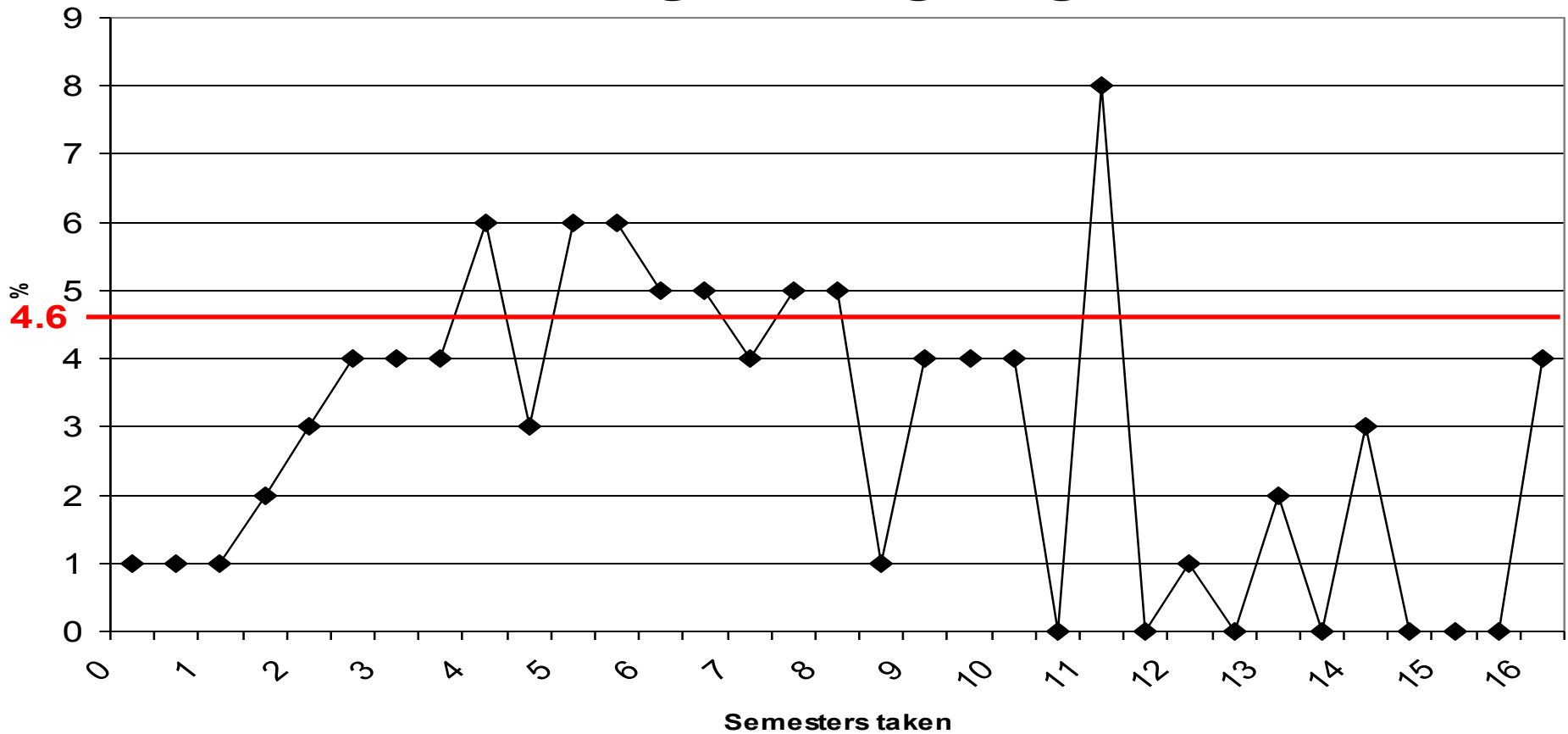
# Expected distance



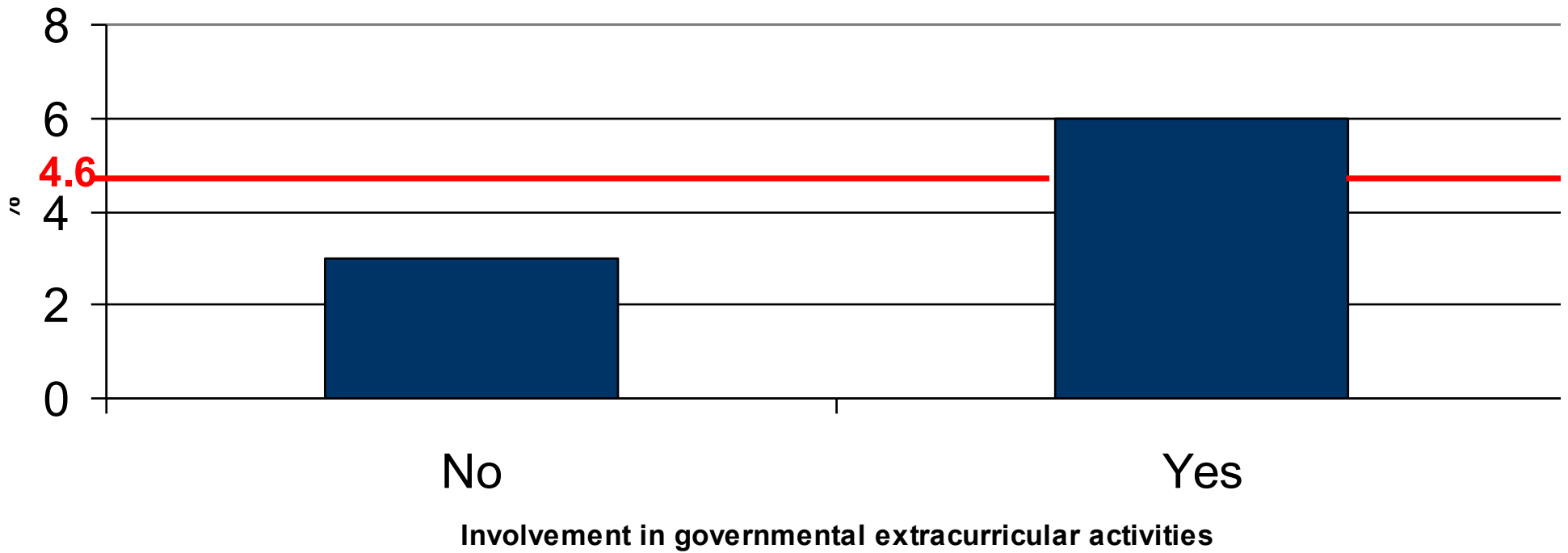
# Preferred college type



# Foreign language

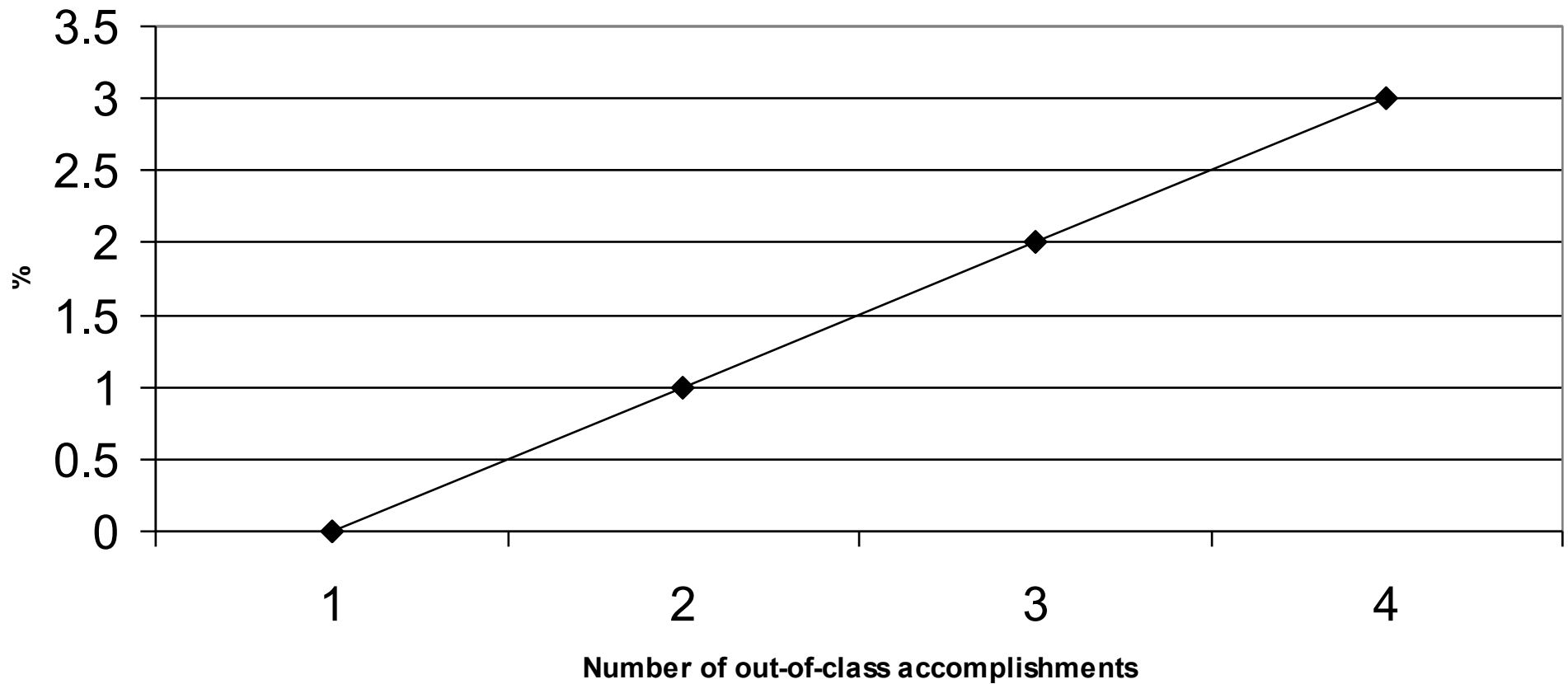


# Government extracurricular activities

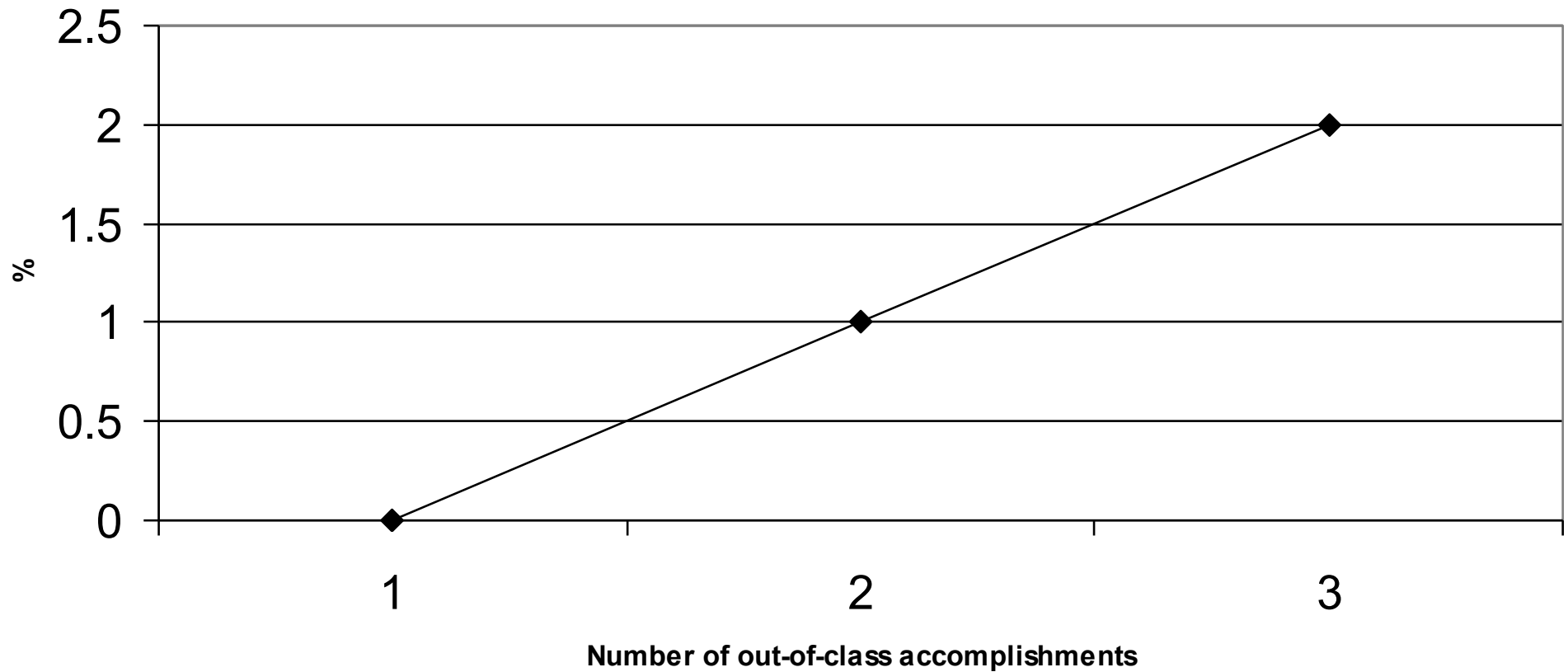




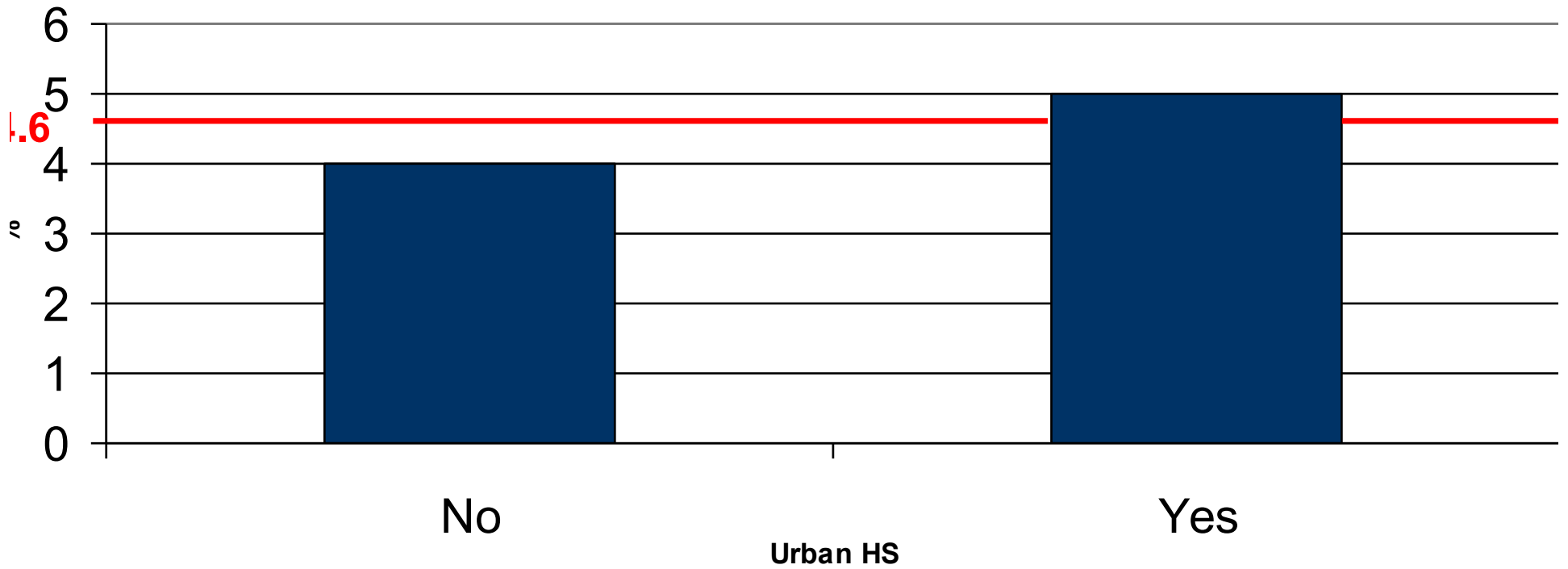
# Accomplishments in science



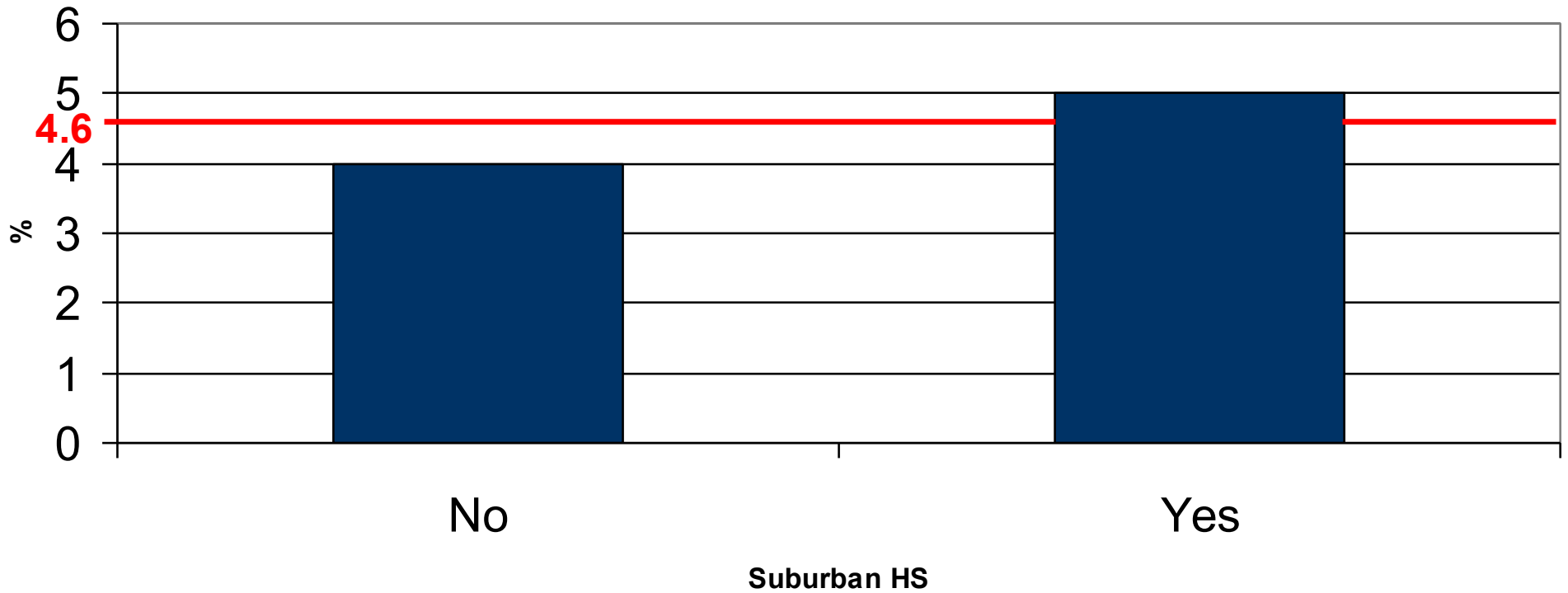
# Accomplishments in athletics



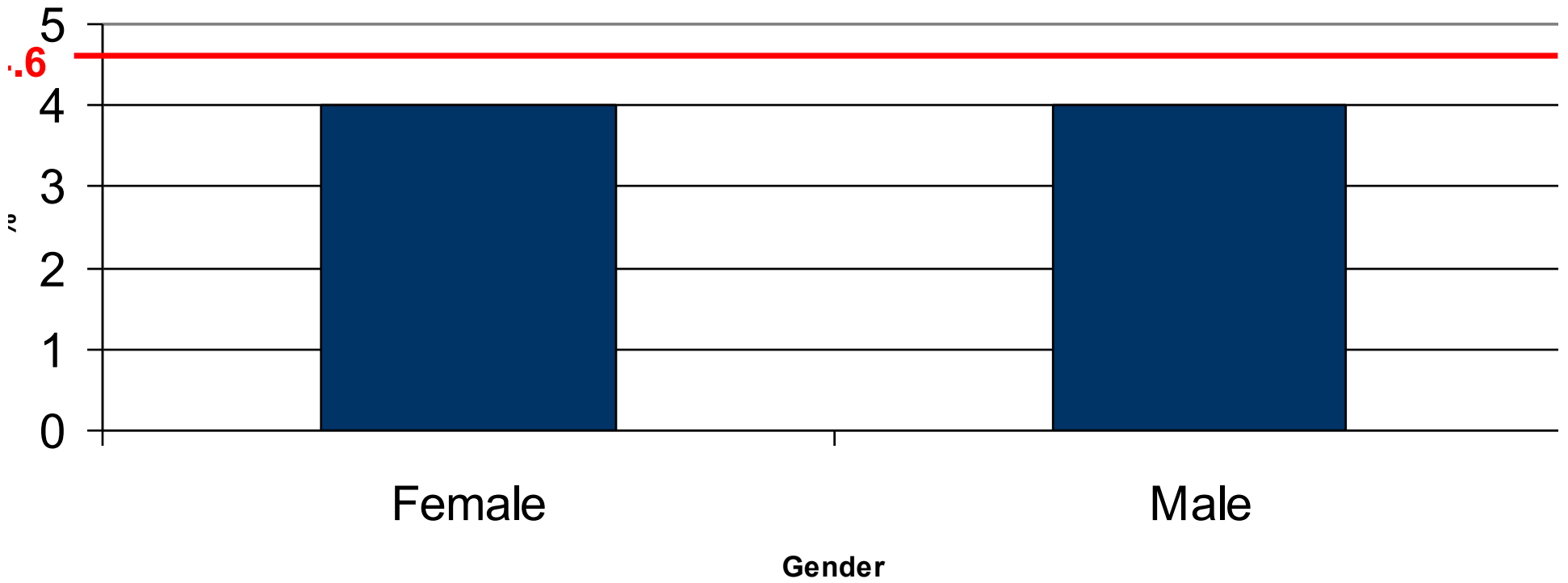
# Urban high school



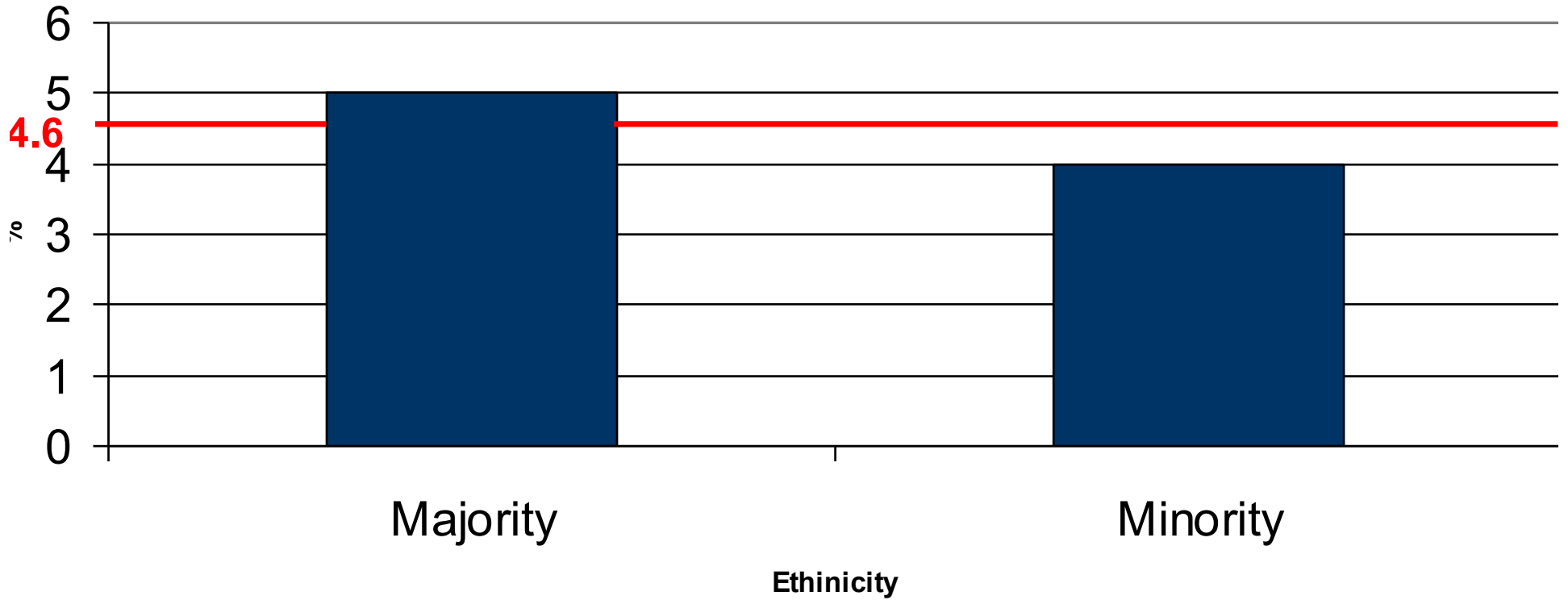
# Suburban high school



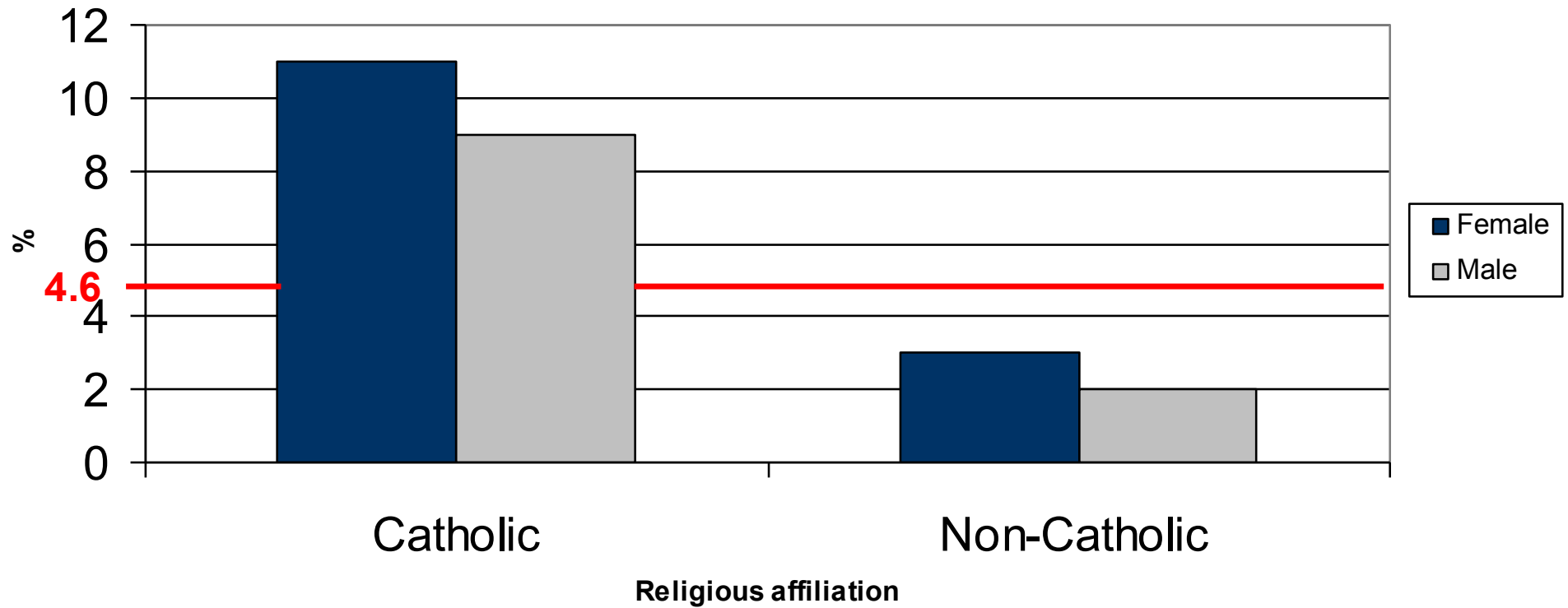
# Gender



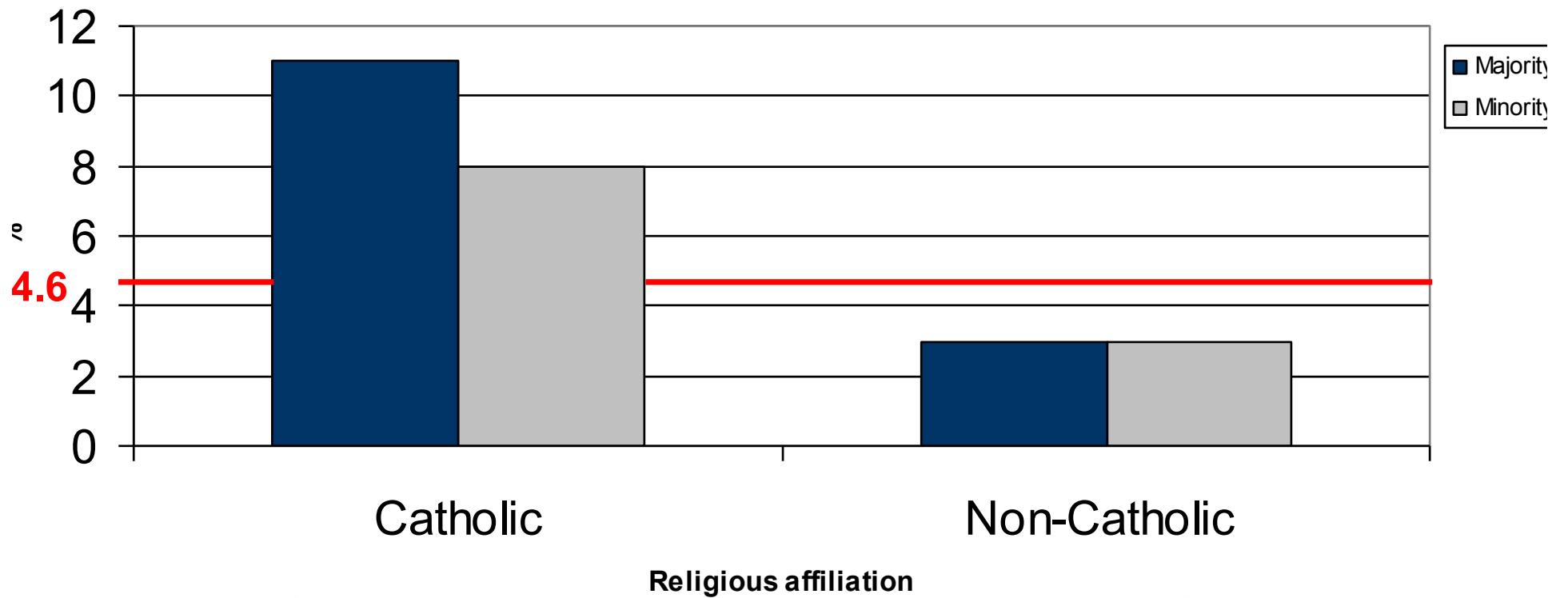
# Ethnicity



## Religious affiliation and gender

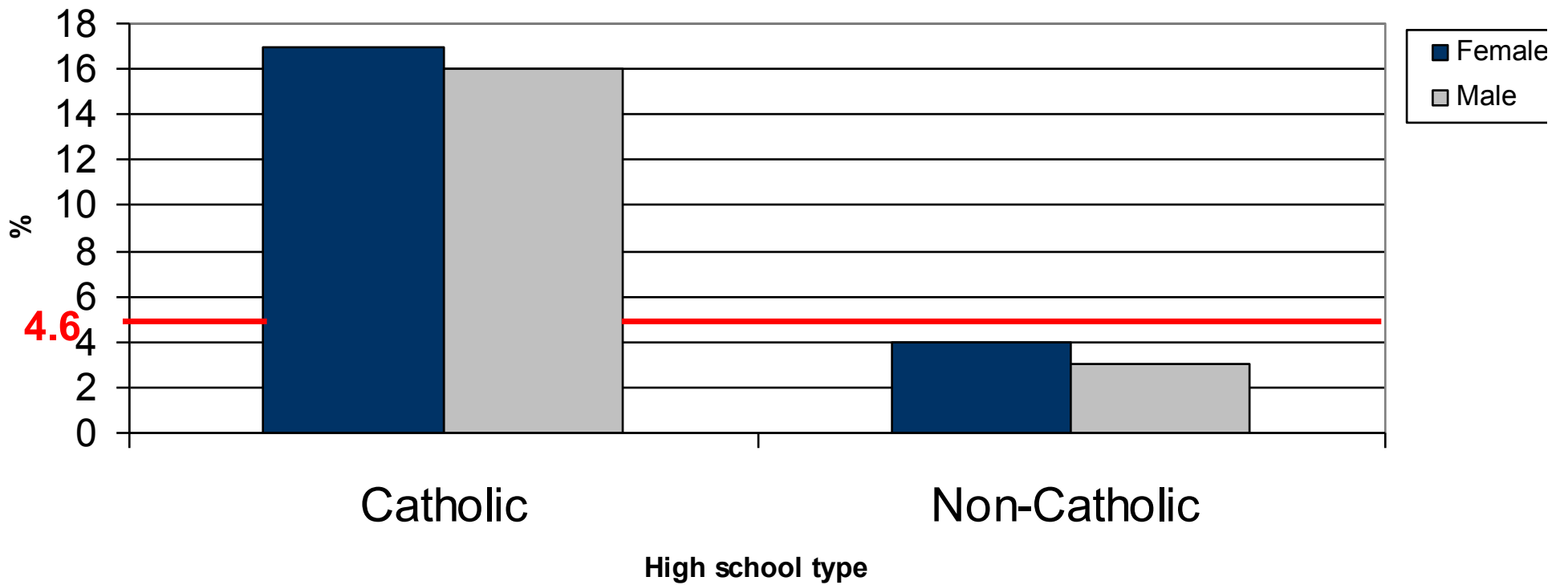


# Religious affiliation and ethnicity

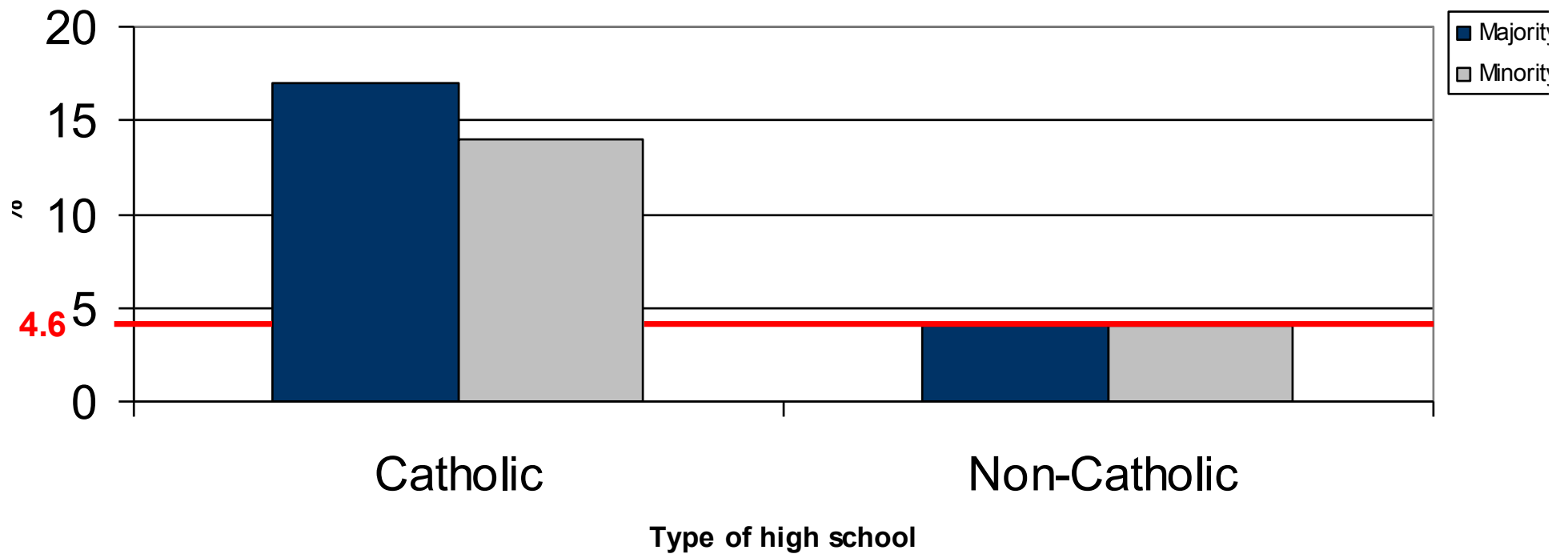




## Religious affiliation and gender



## Type of high school and ethnicity



## Type of high school and religious affiliation

